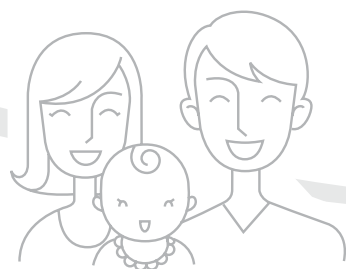


Coway

Water Filtration System **CHP-06DL**

- This Water Purifier is for domestic use. It can not be used in overseas where the power rate is different.
- For the right operation of Coway Water Filtration System read this manual.



*We Think of Human,
Environment and Future*



Coway Co., Ltd.



FEATURES



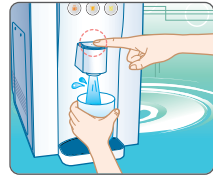
DEAR CUSTOMERS



» Coway Water Filtration System has differentiated function.

1 Electronic, one-touch extraction of water

Select the mode (cold/hot/room water) you want, and touch the extraction part; you can extract a cupful of water (or extract continuously), which is very convenient.



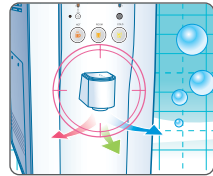
2 Hot water lock, hot water alarm sound

To prevent accidents to inquisitive children, a hot water lock is installed. Hot water cannot be extracted when the lock is turned on. When trying to extract water, alarm sound goes off.



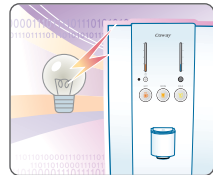
3 Extract cold, hot and room water from a single faucet

More convenient, having cold, hot and room water coming out of a single faucet.



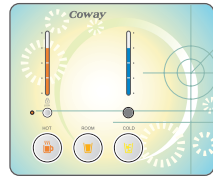
4 Automatic energy saving decreasing noise function

The system automatically controls the operation of the cooler according to the ambient light conditions, decreasing noise and energy use.



5 Display window showing the product conditions at a glance

A display window shows mode status (cold-water/hot-water modes) at a glance, enabling easy confirmation.



First of all, we would like to thank you very much for purchasing this Coway water filtration system. This product is superior to the ones in the past in function and we believe that it will provide you with cleaner and healthier water. We would like to recommend you to read this User's Manual carefully for proper operation and maintenance and keep this manual well together with the warranty. This user's manual could solve your problem so that you can easily fix by yourself in just a few minutes. This system (CHP-06DL) conforms to NSF/ANSI 58 for the reduction of Pentavalent Arsenic, Barium, Cadmium, Mercury, Selenium, Radium 226/228, Trivalent chromium, Hexavalent chromium, Lead, Nitrate/Nitrite as verified and substantiated by test data. This system (CHP-06DL) conforms to NSF/ANSI 42, 53 for the reduction of Chlorine and VOC as verified and substantiated by test data. This system is acceptable for treatment for influent concentrations of no more than 27mg/L nitrate and 3mg/L nitrite in combination measured as N and is certified for nitrate/ nitrite reduction only for water supplies with a pressure of 280kPa(40psig) or greater.

Contents

For information	How to use
Safety Information 04	Please Keep in Mind 13
– Electricity Safety 04	Preparations 17
– Installation Safety 06	Operation Part/Indication Part 19
– Operation Safety 07	How to Operate 22
– Others 09	– To drink cold water 22
Names of Each Part 11	– To drink hot water 22
Water Filtration Process 12	– To drink room water 23
	– Fixed quantity extraction 23
	– Continuous extraction 23
Installation and cleaning	Others
Installing Method 24	Before Asking A/S 33
Cleaning Method 26	Specification 35
– Inside water tank 26	Water Flow Diagram 36
– Gutter 28	Warranty Information 37
Filter Replacement and Daily Check 29	
Filter Replacement Method 31	

※ Please keep the manual near your sight and in the reach of your hand



SAFETY INFORMATION

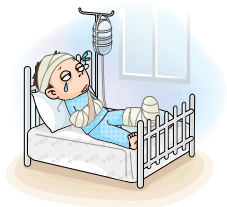


Please read this information to prevent property loss and ensure your safety.

Danger If not observed, serious injury or even death could occur.

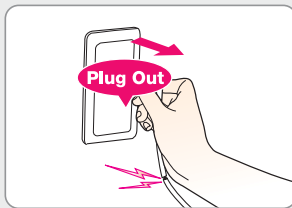
Warning If not observed, serious injury or property damage could occur.

Caution If not observed, slight injury or property damage could occur.

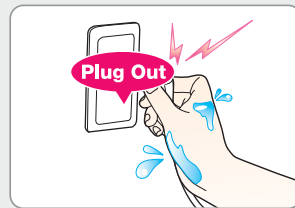


Electricity Safety

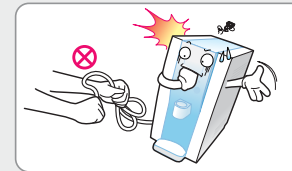
! Do not use a damaged power cord or plug, and loose outlet.
Electrical shock or fire may occur as a result.



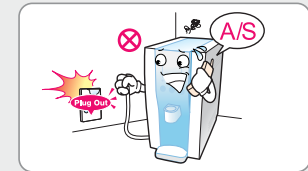
! Do not unplug by pulling the cord or handle the plug with wet hands.
Electrical shock or fire may occur as a result.



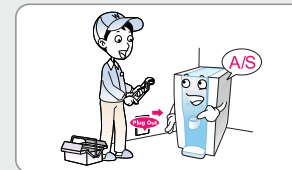
! Do not run the power cord under a heavy object to prevent it from being damaged.
Electrical shock or fire may occur as a result.



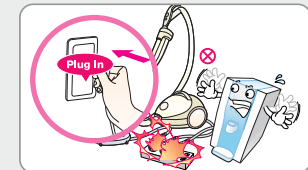
! If the cord or plug is wet, unplug the unit and let it completely dry before subsequent use.
Electrical shock or fire may occur as a result.



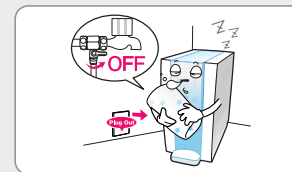
! Unplug the unit before repair, inspection, or replacement.
Electrical shock may occur as a result.



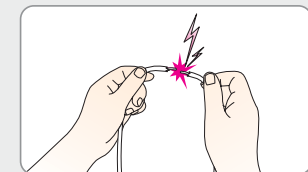
! Do not plug into an outlet or power strip that is being used by several other appliances.
Fire may occur as a result.



! Close the main water supply valve and unplug the power cord when not using for a long time.
Electrical shock or fire may occur as a result.



! Do not attempt to repair the power cord.
Electrical shock or fire may occur as a result.





SAFETY INFORMATION

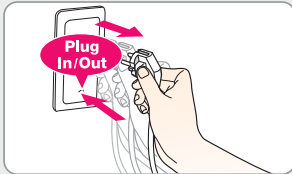


Please read this information to prevent property loss and ensure your safety.

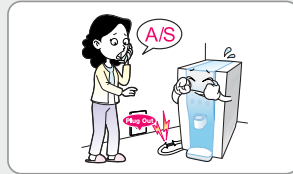


Electricity Safety

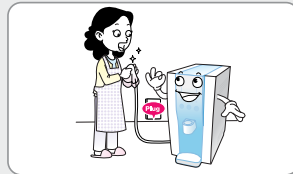
⚠ Do not repeatedly plug and unplug the unit from the electrical outlet.
Electrical shock or fire may occur as a result.



⚠ Do not use if the cord appears to be damaged. Please ask Customer Service to replace the cord.
Electrical shock or fire may occur as a result.

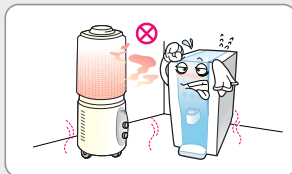


⚠ Remove any dust or water if it's on the plug.
*Never use Benzene or gasoline to clean the plug.
Electrical shock or fire may occur as a result.

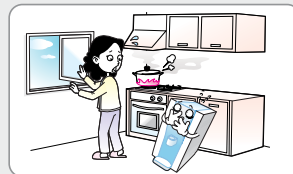


Installation Safety

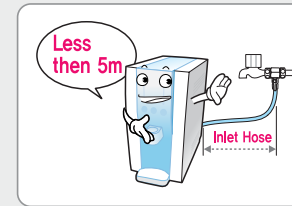
⚠ Do not install the unit near heaters.
Fire may occur as a result.



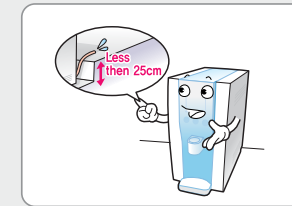
⚠ Keep the product away from the inflammables gas or burnable material.
Electrical shock or fire may occur as a result.



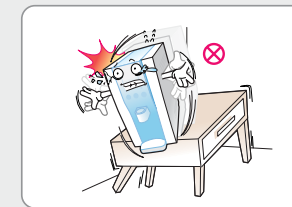
⚠ The length of the water inlet hose must be 5 m or less.
If it is longer, it may degrade the product's performance.



⚠ The length of the water outlet hose must be 25cm or less.
If it is longer, it may degrade the product's performance, and prevent complete drainage of water.

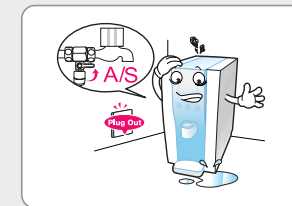


⚠ Use or place the unit on a level area and do not apply force to the unit.
Injury to the user or damage to the unit could result.



Operation Safety

⚠ Cut off the supplying valve and plug out, then call to A/S center in the case of any water Leakage from the product.
Electrical shock or fire may occur as a result.





SAFETY INFORMATION

Please read this information to prevent property loss and ensure your safety.

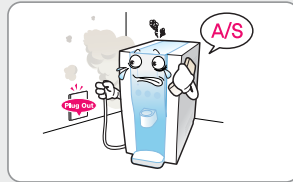


Operation Safety

⚠ Do not place dishes or containers of water, drugs, food, or small metal objects on top of the product.
Danger of electric shock, fire, or product damage if water or alien substances get into the product.



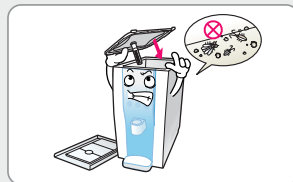
⚠ Immediately unplug and call the Customer Service center if the unit makes a strange noise or odd smell.
Fire may occur as a result.



⚠ Do not put a candle, cigarette or any other flammable object on it.
Fire may occur as a result.



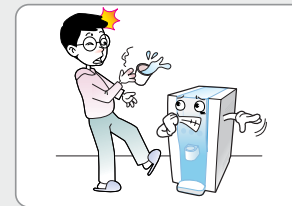
⚠ Please use after completely closing the cover of the water tank in the product.
Bugs or other substances might get inside the product.



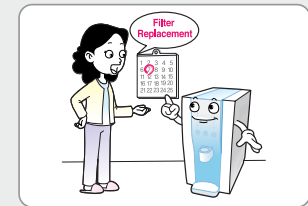
⚠ When water is stored or the product is not in use for a long time, drain all the water in the storage tank before use.
Stored water may get contaminated.



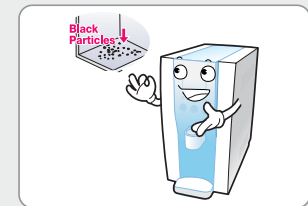
⚠ Be careful not to get burned by the hot water while extracting or draining.
Get burned may occur as a result.



⚠ Periodical filter replacement is prerequisite for getting clean water.
In case filters are overused, the performance of filters is deteriorate.



⚠ When moving the product or replacing the fine post-carbon filter there may be black residue particles under the tank bottom stored water may get contaminated.



Certain level of fine dust may be introduced to silver coated activated carbon that is used to the fine post-carbon filter to enhance the taste of water; thus, it is harmless to human body.



Others

⚠ Do not spray water or wipe them with benzene when cleaning.
Electrical shock or fire may occur as a result.





SAFETY INFORMATION

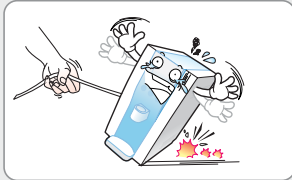
Please read this information to prevent property loss and ensure your safety.



Others

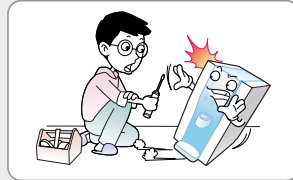
- ⚠ Do not carry the unit by its power cord.

Electrical shock or fire may occur as a result.



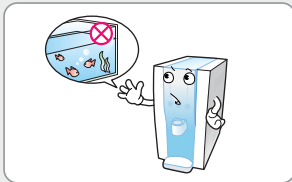
- ⚠ Do not repair, disassemble, or modify.

Electrical shock or fire may occur as a result.



- ⚠ Do not use filtered water for the water exchange of an aquarium or a fishbowl.

Certain fish may die as a result.

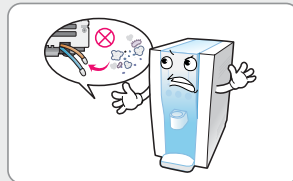


- ⚠ Do not lift or move the product with extraction faucet.

Danger of leakage or malfunctioning



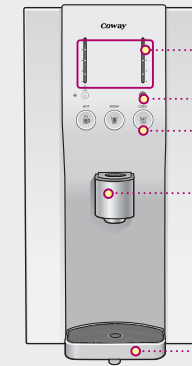
- ⚠ The filtration system installation shall comply with state and local laws and regulations. Do not use with water that is microbiologically unsafe or of unknown quality without adequate disinfection before or after the system.



NAMES OF EACH PART



Front



▶ Operation Part

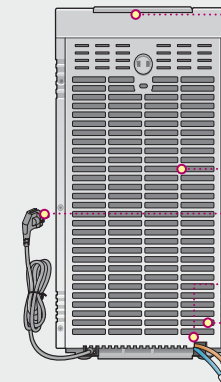
▶ Light detection sensor

▶ Selection Button

▶ Cold/Hot/Room Water Extraction faucet

▶ Gutter

Rear



▶ Top Cover

▶ Radiator

▶ Power Cord

▶ Outlet(Blue)

▶ Inlet(Orange)



WATER FILTRATION PROCESS

The filter is the core technology of the filtration system. If you don't use qualifying filter or if you use an old filter that has expired, the system performance may degrade.

▶ The 6-step water filtering system (CHP-06DL)

● NEO-SENSE FILTER

Reduces various foreign bodies that come from the feed water pipe such as dirt, sand, rust particles, VOCs and chlorine.

● MEMBRANE FILTER (RO)

The RO(Reverse Osmosis) Membrane filter reduces Pentavalent Arsenic, Barium, Cadmium, Mercury, Selenium, Radium 226/228, Trivalent chromium, Hexavalent chromium, Lead, Nitrate/Nitrite. The influent water to the system shall include the following characteristics.

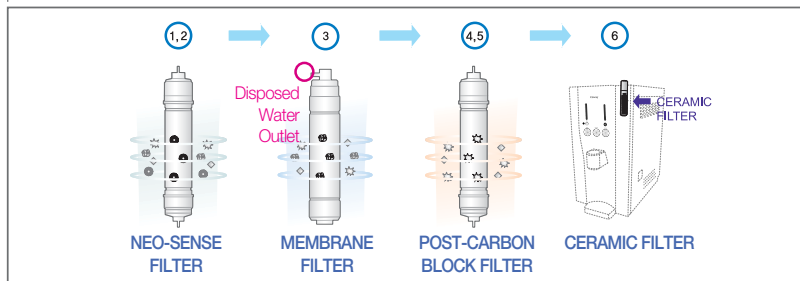
- No organic solvents · Chlorine : < 2 ppm · pH : 7-8 · Temperature : 41-95 °F (5-35 °C)
- Iron : < 2 ppm · Turbidity : < 1 NTU · Hardness : < 1000 mg/L

● POST-CARBON BLOCK FILTER

It is a composite filter. The post-carbon filter removes odor of water and improve water taste. And the filter sensor eliminates the dust particles in the post-carbon filter.

● CERAMIC FILTER

Restraints propagation of the microorganism inside water tank and enhances sanitation.



⚠ WARNING

The disposed water shall be used for cleaning a toilet, a house, dishes, and as water for sundry uses. However, please do not use it for potable water or cooking water.



This system conforms to NSF/ANSI 58 for the reduction of Barium, Radium 226/228, Cadmium, Lead and TDS as verified and substantiated by test data.

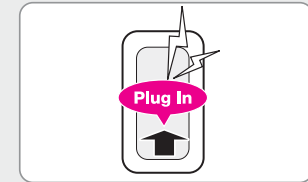


PLEASE KEEP IN MIND



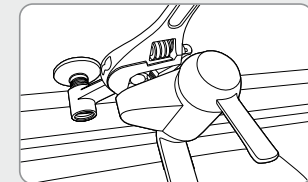
▶ The summary for the proper installation of the water filtration system.

- 1 Connect the power cord to the voltage rating that matches it on the rating plate only.



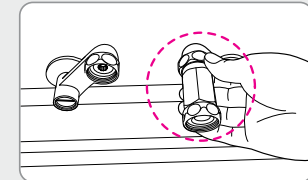
- 2 Close main water supply valve to separate the faucet.

⚠ Do not turn the water pipe.

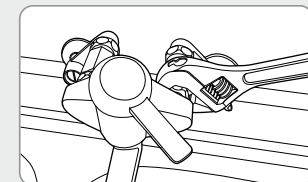


- 3 Wind the teflon tape on the adaptor and fit it to the pipe.

⚠ Shall install the adaptor with connector on the cold water pipe.

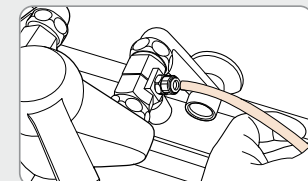


- 4 Connect the faucet with the adaptor.



- 5 Connect 1/4 orange tubing with the connector on the adaptor.

⚠ Flush water through each filter at least 5 minutes before Connection





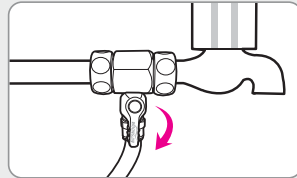
PLEASE KEEP IN MIND



► The summary for the proper installation of the water filtration system.

- 6** Open the main water supply valve to supply water to the product.

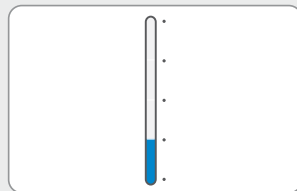
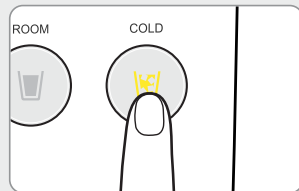
Discard first 2 tanks of water.



► The summary for the proper use of the water filtration system.

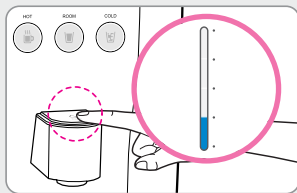
- 1** Select the cold button to drink cold water.

To drink cold water, the cold water function must be operating. Press the cold button for three seconds, and the cold water mode lamp comes on; you can then use cold water. (See P. 20). If you don't need the cold water, press the cold button again for three seconds, and the lamp goes out, exiting cold water mode.



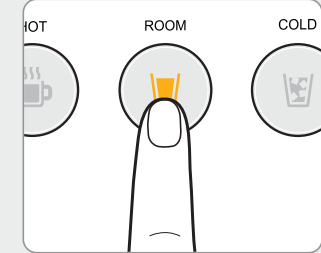
- 2** To drink cold water, press the cold button after the cold water lamp comes on.

To drink cold water, select the cold button and touch the extraction part, and you can extract a cupful of water. If you touch the extraction part again during extraction, water stops flowing. (See P. 22)



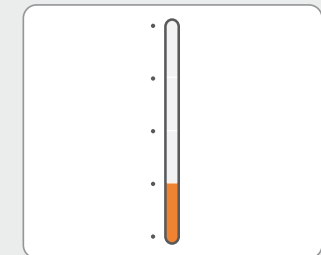
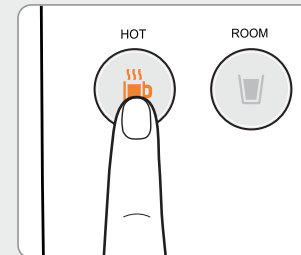
- 3** To drink room water, select the room button.

Select the room water button and touch the extraction part, and you can extract a cupful of water. If you touch the extraction part again during extraction, water stops flowing.



- 4** Select the hot button to drink hot water.

To drink hot water, the hot water function must be operating. Press the hot button for three seconds, and the hot water mode lamp comes on; you can then use hot water. (See P. 21). If you don't need the hot water, press the hot button again for three seconds, and the lamp goes out, exiting hot water mode. (The mode automatically returns to cold water mode three seconds after the hot water mode is selected).





PLEASE KEEP IN MIND



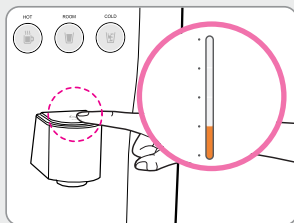
PREPARATIONS



► The summary for the proper use of the water filtration system.

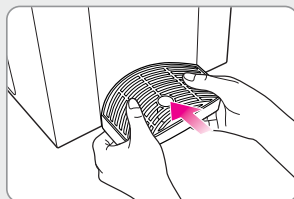
- 5 To drink hot water, select the hot button after the hot water lamp goes on.**

Select the hot button and touch the extraction part, and you can extract a cupful of water. If you touch the extraction part again during extraction, the water stops flowing. (See P. 22)



- 6 Empty the gutter periodically.**

Prevent water overflowing from the water receptacle by periodically emptying it. (See P. 28)



- 7 Need for periodical filter change and maintenance.**

To drink clean water, the filter needs to be changed and cleaned periodically. Change the filter according to the filter replacement cycle. (See P. 30)

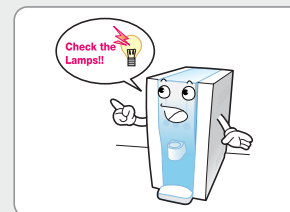
► Please check before use

- ⚠ Connect it to voltage rating that matches it on the rating plate.**
Then, open the feed valve to supply water to the filtration system.



- When the lamp on the indication parts are turned out**

When the lamp on the indication parts are turned out please check the reason for break of electric supply in case of electricity failure or other conditions.



- Draining hot water**

Pull the drainage door at the side downwards, and insert the drainage hose; this way, you can completely drain the hot water inside the system.

※ Note: take care not to burn yourself, since hot water suddenly starts to drain as soon as the hose is inserted.



- Hot water caution**

Take care to avoid burns when extracting hot water.



- After installation**

Use after throwing away the water in the water tank up to full level more than twice.





PREPARATIONS



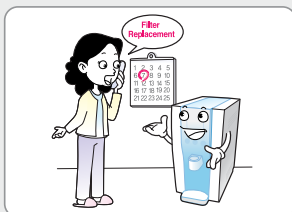
OPERATION PART /INDICATION PART



► Please check before use

■ Regular filter change

The regular filter change is very important to have clean water. The filter after life is ended may degrade the performance. Thus, do not miss the time for the filter change.



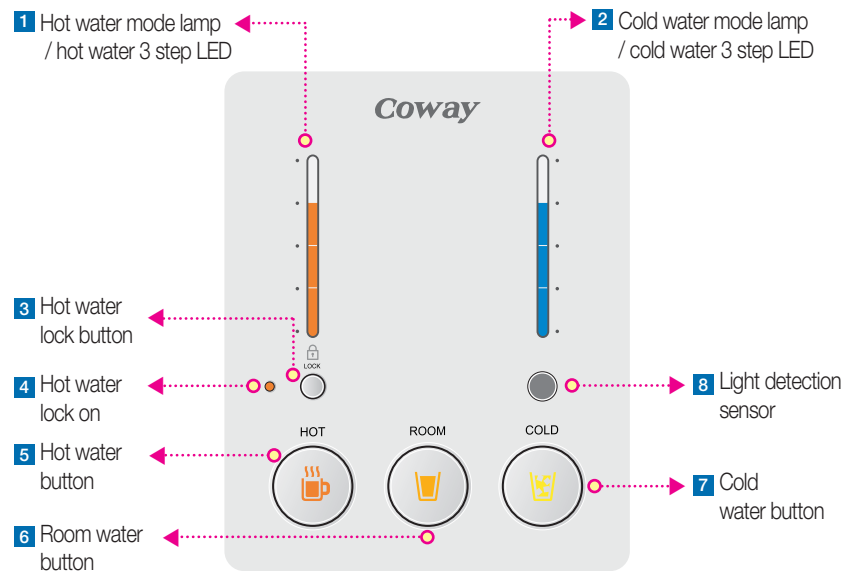
■ In case of no service for a long time

In case of no service for a long time, completely drain the water from the tank. Next, fill and empty water again. And use the product.



When not using for a long time please lock the main water supply valve and plug out the power cord.

► Operation Part/Indication Part



1 Hot water mode lamp
Hot water temperature 3 step LED

The lamp is on when hot water mode is selected. The lamps reflect the temperature of the water, so more lamps come on as the temperature gets higher.

2 Cold water mode lamp
Cold water temperature 3 step LED

The lamp is on when a cold water mode is selected. The lamps reflect the temperature of the water, so more lamps come on as the temperature gets lower.

3 Hot water lock button

When the hot water lock button is pressed for three seconds, hot water cannot be extracted, even by pressing the hot water button, and an alarm goes off.

4 Hot water lock on

The lamp goes on when the hot water lock button is selected.



OPERATION PART /INDICATION PART



▶ Operation Part/Indication Part



5 Hot water button

To use hot water, press the hot button, check if the hot water mode lamp goes on, and extract water. (However, the mode automatically returns to cold water mode three seconds after hot water has been extracted.)



6 Room water button

To use room water, press the room button and extract water.



7 Cold water button

Press the cold button, check if the cold water mode lamp is on, and extract water.

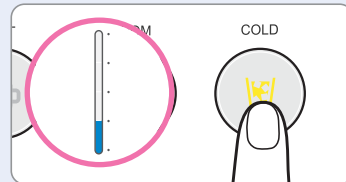


8 Light detection sensor

Detects the ambient light, reducing energy usage by automatically decreasing the operation frequency of the cooler.

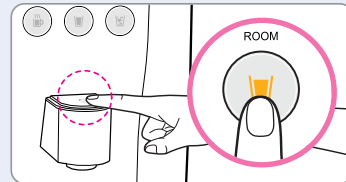
■ When using cold water

Press the cold button, and check if the cold water mode lamp is on.



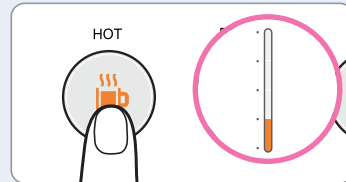
■ When using room water

Press the room button, and touch the extraction part.



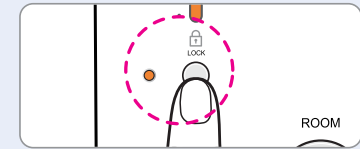
■ To use hot water

Press the hot button, and check if the hot water mode lamp is on.



■ When using the hot water lock

Press the hot water lock for three seconds. Check if the hot water lock lamp comes on.

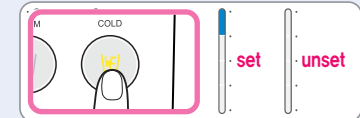


■ Light detection sensor setting function

Press the hot and cold buttons together for three seconds; the hot water mode lamp flickers as shown in the picture with a "pinging" sound, and the system enters the setting mode.

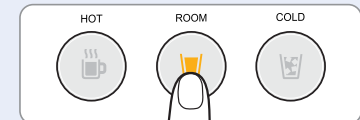


Press the cold button once; the cold water mode lamp comes on, and the light detection sensor function is set.



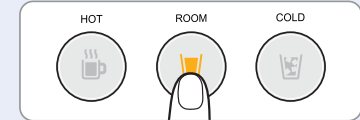
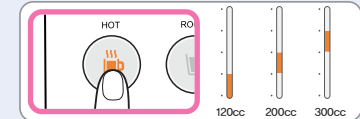
(When the cold water mode lamp goes out, the function is disabled.)

After setting the mode, press the room button for three seconds; the system saves the last set mode and converts to standby mode.



■ Fixed quantity extraction function

Press the hot and cold buttons together for three seconds; the hot water mode lamp flickers as shown in the picture with a "pinging" sound, and the system enters the setting mode. The quantity is adjusted each time the hot button is pressed (120cc → 200cc → 300cc → 120cc), and the hot water mode lamp goes on according to each quantity phase. After completing the mode setting, press the room button for more than three seconds; the system saves the last set mode and converts to standby mode.



※ To use both the hot water and cold water modes, press each button for more than three seconds. Once both hot water and cold water mode lamp go on, you can use them.

※ "Light detection sensor" is set to disabled status at the initial usage

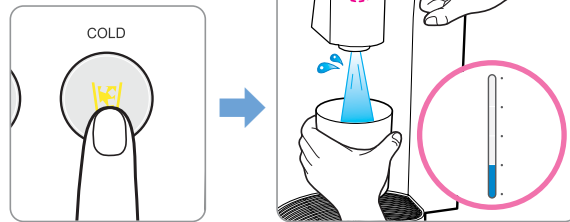


HOW TO OPERATE



▶ To drink cold water

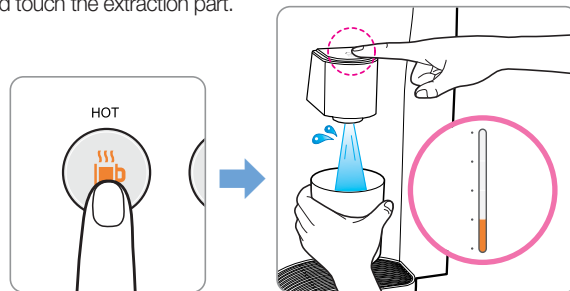
Press the cold button after the cold water mode lamp has come on, and touch the extraction part.



TIP When the cold water does not extract from the product please check if the cold water mode indicator is on.

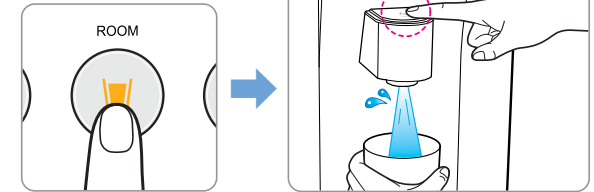
▶ To drink hot water

Press the hot button after the hot water mode lamp has come on, and touch the extraction part.



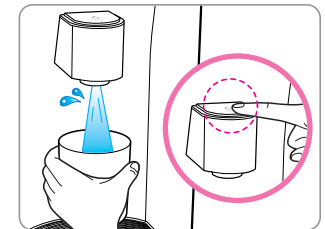
▶ To drink room water

Press the room button and touch the extraction part.



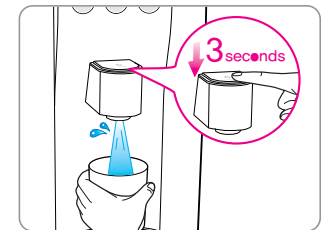
▶ Fixed quantity extraction

Select the water mode you desire, and lightly touch the extraction part. A predetermined quantity of water comes out.



▶ Continuous extraction

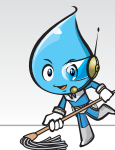
Select the water mode you desire, and touch and hold the extraction part for 3 seconds or more. The extraction part LED flickers, signifying continuous extraction, and discharges water for 60 seconds. Touching the extraction part again during extraction stops the flow of water.



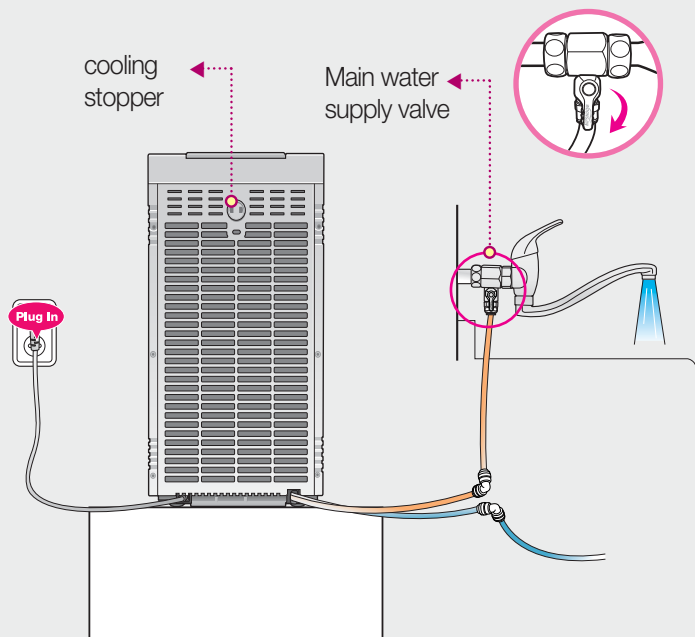
TIP The influent water should not include any organic solvents because they may damage RO membrane polymer and may decrease the performance of RO membrane.



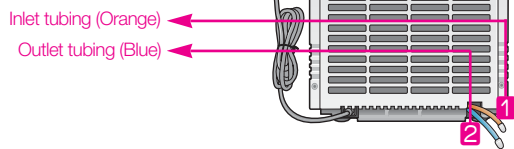
INSTALLING METHOD



► Follow the instruction for installation



- Connect the orange color inlet tubing **1** to the tap water supplying pipe. Connecting the outlet tubing **2**.



⚠ Be cautious

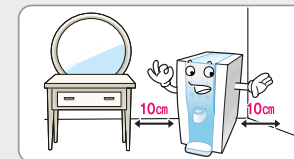
■ Installation place I

When installing avoid bumpy areas, damp areas, and area in the reach of direct sunlight, dusty areas, water splashing areas.



■ Installation place II

Have 10cm space between the wall and the product and install above the floor where it is solid and flat.



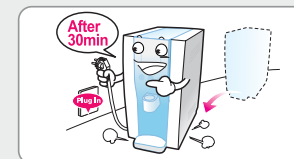
■ After installation

After installing use after throwing away room water more than twice.



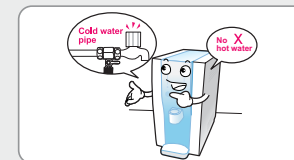
■ Moving and installation.

When moved, connect the power cord after 30minutes of installation.



■ Cold water pipe

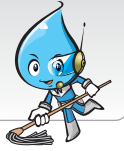
Always connect to the cold water pipe. (When it is connected to hot water pipe the filter of the Water Purifier may get damaged)



- To secure the optimum performance of the product, consult with an installation expert for further installation. -Service center : 213-480-1600
- Residuals may be left inside the filter which is used during the process of inspection when the product was manufactured. - It is not used product so feel safe to use them.
- ⚠ Do not use the main water supply valve or hose again that is used before when installing the product.

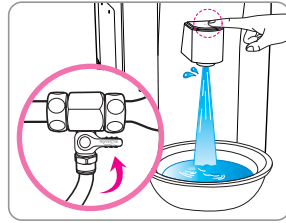
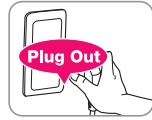


CLEANING METHOD

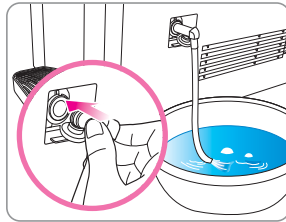
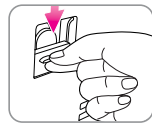


► Inside water tank

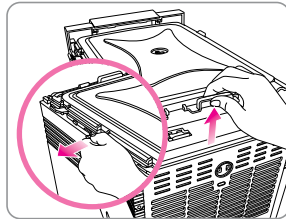
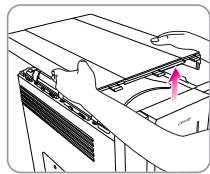
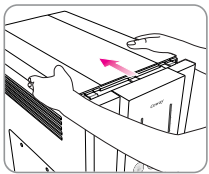
- 1** Close the water supply valve, press the cold water button at the front of the product for 3 seconds to turn off the cold water function, and completely drain the cold/room-temperature water by selecting continuous cold water extraction mode.



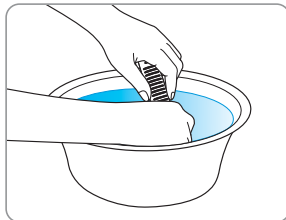
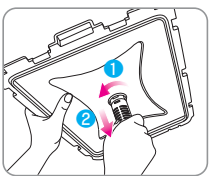
- 2** Open the drain door, and remove the red drain safety cap. Using the drainage hose, completely discharge all the hot water in the tank, and store the water. When the water is completely drained, pull out the power cord.



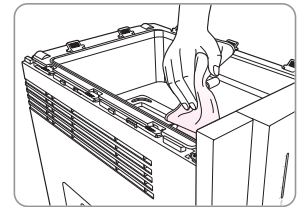
- 3** Open the top cover of the product, and open the water drum cover inside the product.



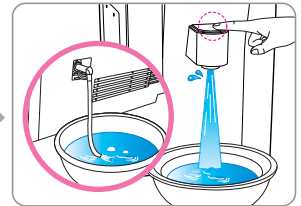
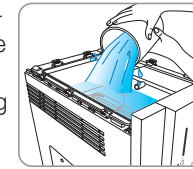
- 4** Remove the ceramic filter from the bottom part of the water drum cover, and clean by agitating in room-temperature water.



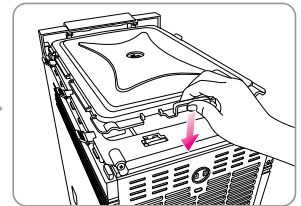
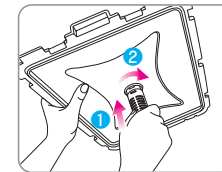
- 5** Clean the surface of the water drum with a soft cloth.



- 6** Rinse the water drum with the previously stored room-temperature water, plug the power in, and completely drain the rinsing water using the cold water continuous extraction function.



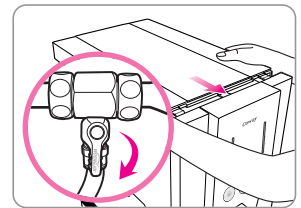
- 7** Fix the ceramic filter underneath the water drum cover, and close the water drum cover.



- 8** Close the top cover and then connect the power cord before opening the main water supply valve. After checking water extraction from the faucet of the cold/room water and hot water, **press the cold water selection switch in front of the product for re-operation.**



⚠ Please close the cover of the storage tank completely.
Ants or other substances might get inside.





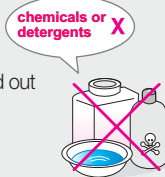
CLEANING METHOD

► Inside water tank



⚠ **When cleaning storage tank do not use chemicals or detergents.**

When the chemicals and detergents are not washed out completely it may be harmful to health.

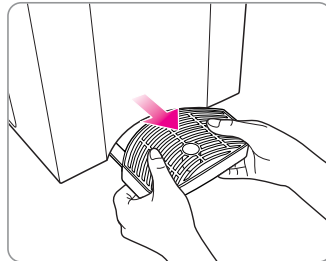


- Please always keep environment clean and clean the storage tank once every two months.

► Gutter

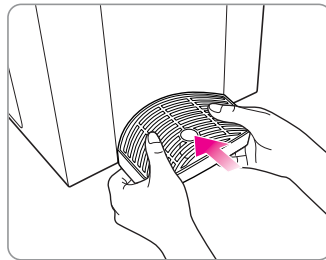
1 Removing the receptacle

Hold the receptacle by the front, and pull lightly.

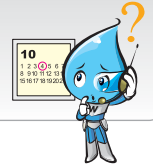


2 Installing the receptacle

Place the water receptacle hook in front of the product. Lightly push the hook while pressing it downwards.



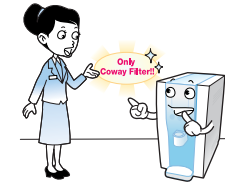
FILTER REPLACEMENT AND DAILY CHECK



► Filter Replacement

■ Filter

The vitality of product is the filter. The fraudulent filters or missing time for filter change may degrade the performance and so interrupt the filtration.

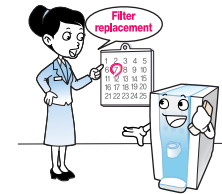


■ Estimated Time of Filter Replacement

If the filter is not regularly replaced, it may degrade the water quality from the product. The filter change cycle may vary within the range of expected replacement cycle depending on the feed water quality.

※ The period for the filter exchange is made based on 10ℓ use in a day for house use (4 people based) and 20ℓ use for business.

Part No.	Names of Filter	Usable Period
	Neo-sense Filter	6 months
	Membrane Filter(RO)	24 months
	Post-Carbon Block Filter	18 months
	Ceramic Filter	12 months

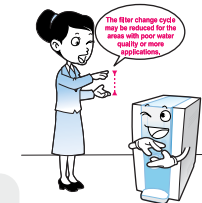


- This reverse osmosis system contains a replacement component critical to the efficiency of the system. Replacement of the reverse osmosis component should be one with identical specifications, as defined by the manufacturer, to assure the same efficiency and contaminant reduction performance.
- This reverse osmosis system contains a replacement treatment component critical for the effective reduction of total dissolved solids, and that the product water shall be tested periodically to verify that the system is performing properly.

■ About Estimated Time of Filter Replacement

The filter change cycle described above is not the filter quality warranty period but the expected cycle that the filter shows its original performance. (based on the tap water.)

※ The filter change cycle may be reduced for the areas with poor water quality or more applications.



The product water should be tested every 6 months to ensure that the contaminants are being reduced effectively. Please contact your local dealer or Coway to initiate this service.



FILTER REPLACEMENT AND DAILY CHECK

► Regular Check

For safe operation, we recommend the frequent check on the product. Keep the optimum status of the product by frequent check for the following items.

■ Power

- Does the indication part repeat ON and OFF when you touch the power cord When the power is connected?
- Is a part of power cord hotter than usual?
- Is a part of power cord distorted, discolored or damaged?

▲ For any event above, immediately stop the operation and contact your nearest Coway Customer Service Center.

■ Indication Part

- Does any lamp on the indication part abnormally flicker?

For the abnormal flickering of lamp, immediately Contact your nearest Coway Customer Service Center.

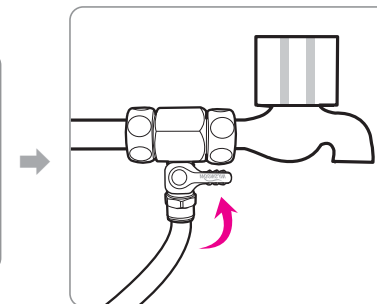
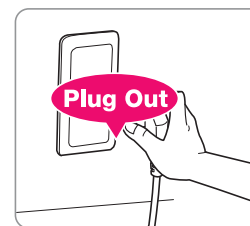


FILTER REPLACEMENT METHOD

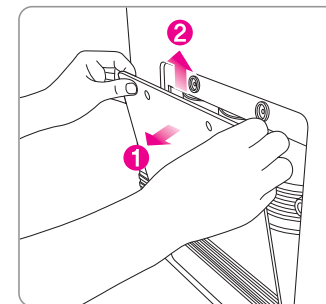
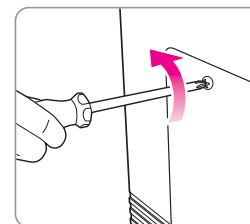


► Please replace filter

- 1 After pulling out the power plug lock the feed water valve and drain out the water inside the Water Purifier.



- 2 Pull up the front drain door and using a cross screw driver loosen the screw. Push down the lower cover and pull to the front and separate.





FILTER REPLACEMENT METHOD



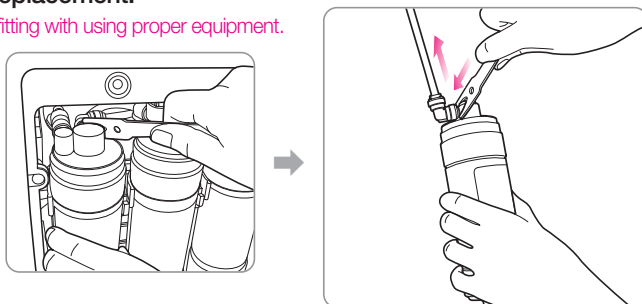
BEFORE ASKING A/S



▶ Please replace filter

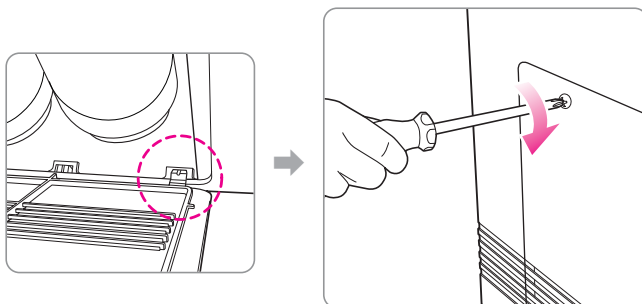
3 Replace after separating the fitting connected to the filter needed for replacement.

※ Separate the fitting with using proper equipment.



⚠ After replacing the filter check if there is no leakage and drain out the room water.

4 Adjust the front cover to the matching part at the lower part and then close it pressing downward.



- When exchanging neo-sense filter : Install the filter after cleaning it for about 30seconds.
- When exchanging fine post-carbon filter : Install after cleaning the filter with water that has gone through the neo-sense filter for about 3 minutes.

▶ Check the followings before asking A/S.

The product may not properly work due to the reasons except the breakdown because you are not accustomed to how to operate or any negligible reasons. In those cases, check the followings, and you can solve the simple troubles without the help from the customer service center. If the trouble continues after you check the followings, contact your nearest Customer Service Center.

Problem	Check Items	Solutions
The water tastes weird	• Did you clean the water drum?	Clean the water drum.
	• Did you use the filter system for too long?	Remove the stored water and clean the water drum.
	• Is it about time to change the filter?	Request filter change.
The water is flowing slower.	• Is it about time to change the filter?	Request filter change.
	• Did you lock the water supply valve?	Open the water supply valve.
	• Did the temperature of the water drop suddenly?	When the temperature drops, the amount of water filtered decreases.
There is no cold water.	• Is the cold water lamp on?	Turn the cold water mode on by pressing the cold water button for 3 seconds
	• The cooling system may be malfunctioning.	Request A/S.
	• Is the power turned on?	Connect the power to the voltage rating that matches it on the rating plate.
	• Did you close the water supply valve?	If the water level is low, the cold water function does not activate, to protect the electronic motor. Open the water supply valve.
There is no hot water	• Is the hot water lock lamp on?	Deactivate hot water.
	• Is the hot water lamp on?	Turn the cold water mode on by pressing the cold water button for 3 seconds
	• Is the power connected?	Connect the power to the voltage rating that matches it on the rating plate.
	• Is room-temperature water overflowing or leaking?	Request A/S.



BEFORE ASKING A/S



SPECIFICATION



Problem	Check Items	Solutions
Water does not come out, or the fixed quantity has changed	• Is it about time to change the filter?	Request filter change.
	• Is the water supply valve closed, or the water supply cut?	Open the water supply valve.
	• cold/warm/room-temperature water extraction faucet may be malfunctioning.	Request A/S.
	• Is the hose bent?	Straighten the hose.
	• Is the water inlet hose too long?	Shorten the water inlet hose to 5m or less.
All functions suddenly stop during operation.	• Is the water being supplied properly?	Check the water supply valve.
	• Is the power turned on?	Connect the power to the voltage rating that matches it on the rating plate.
	• Is room-temperature water overflowing or leaking?	Request A/S.
There is leakage.	• Is water leaking from the water drum cover or from inside the product?	Open the top cover and check. Close the water supply valve and request A/S.

 A/S Phone No : 213-480-1600



Product	Coway Water Purifier	
Model	CHP-06DL	
Filtration method	Reverse Osmosis	
Power Supply	Voltage rating that matches it on the rating plate.	
Tank capacity	Room water	0.8gal
	Cold water	0.6gal
	Hot water	0.3gal
	Total water	1.7gal
Demension	260(W) x 440(D) x 510(H)mm <10.2(W) x 17.6(D) x 45.3(H)inch>	
Net Weight	18.7kg(41.2 lb)	
Filtration Capacity	76.8ℓ / day (20GPD) (25℃, 20psi)	
Working Pressure	0.07-0.82MPa (20-120psi)	
Working Temperature	5-35℃ (41-95°F)	

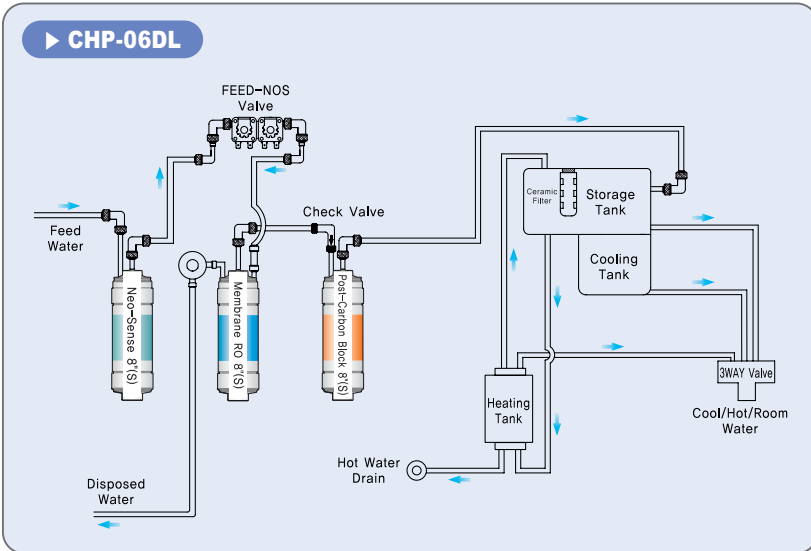
- ※ Without any prior notice, all or parts of the product are subject to change for the purpose of improving the performance of the product.
- ※ Efficiency rating means the percentage of the influent water to the system that is available to the user as reverse osmosis treated water under operating conditions that approximate typical daily usage.
- ※ Recovery rating means the percentage of the influent water to the membrane portion of the system that is available to the user as reverse osmosis treated water when the system is operated without a storage tank or when the storage tank is by passed.



WATER FLOW DIAGRAM



WARRANTY INFORMATION



Coway

Product Guarantee

1. Parts and components shall be replaced free of charge within the guarantee period if the defects occur due to manufacturing defects in normal operation.
2. Contact us in case of breakdown.
3. In the following cases, repair work shall be charged even within the guarantee period.
 - ▶ Breakdown caused by careless operation or unreasonable repair and renovation.
 - ▶ Breakdown caused by nonperformance of the instructions specified in the manual.
4. Even after the expiration of guarantee period, it is possible to apply for charged repair.
5. Present this Letter of Guarantee whenever repair is needed.
6. This Letter of Guarantee is valid only in domestic where you buy this product.
7. Keep this Guarantee carefully as it is not re-issued.

Model	CHP-06DL	Guarantee Period
Serial No.		1 year
Date of Purchase		
Guarantee Period	From	To
Customer's Address		
Customer's Name	Tel.	

Please contact our customer's service center in case you are not satisfied with our A/S service.

- Nationwide A/S Call : 213-480-1600
- Nationwide Periodical Inspection and Filter Replacement Call : 213-480-1600
- Customer Counseling Center Call : 213-480-1600 Fax :

⚠ In case any other filters or parts which are not genuine products of we are used, we is not responsible for any problems related to water quality.

Coway Co., Ltd
 658 Yoogoo-Ri, Yoogoo-Eub, Gongju-Si, Choongnam, Korea
 Tel : 82-41-850-7879 Fax : 82-41-841-7816
 www.coway.com



MEMO



Handwriting practice area on page 38, featuring 20 horizontal dotted lines for writing.

Handwriting practice area on page 39, featuring 20 horizontal dotted lines for writing.